

## **ACCESSORI PER FOTOCELLULE**

CATARIFRANGENTI

STAFFE

STRINGIRAGGIO (OTTURATORE)

CARTA RIFRANGENTE

## ***ACCESSORIES FOR PHOTOELECTRIC SENSORS***

*REAR REFLECTOR*

*MOUNTING BRACKETS*

*SHUTTER*

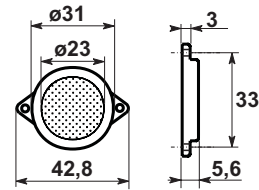
*REFLECTOR PAPER*

CATARIFRANGENTE SCT1 - SCT1 REAR REFLECTOR



DIMENSIONI MECCANICHE

MECHANICAL SIZE



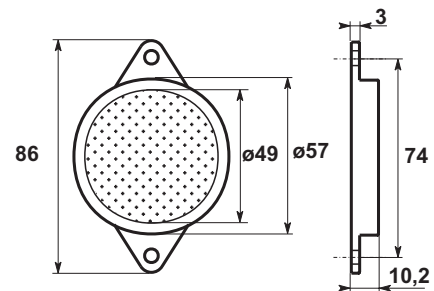
SCT1 = Catarifrangente Ø 23mm / 23 mm Ø rear reflector

CATARIFRANGENTE SCT2 - SCT2 REAR REFLECTOR



DIMENSIONI MECCANICHE

MECHANICAL SIZE



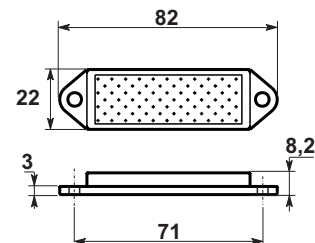
SCT2 = Catarifrangente Ø 49mm / 49 mm Ø rear reflector

CATARIFRANGENTE SCT3 - SCT3 REAR REFLECTOR



DIMENSIONI MECCANICHE

MECHANICAL SIZE



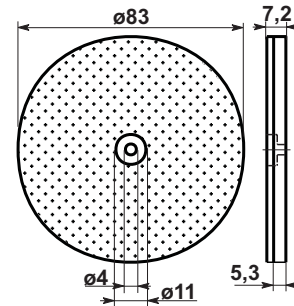
SCT3 = Catarifrangente rettangolare / rectangular rear reflector

CATARIFRANGENTE SCT4 - SCT4 REAR REFLECTOR



DIMENSIONI MECCANICHE

MECHANICAL SIZE



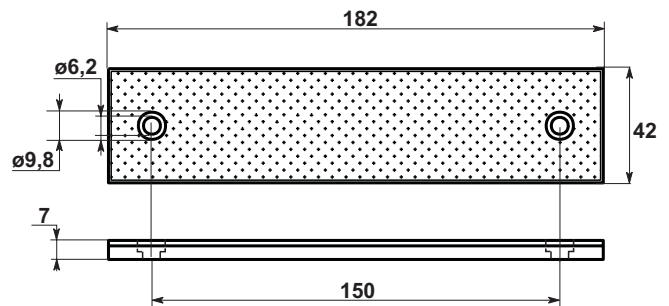
SCT4 = Catarifrangente Ø 83mm / 83 mm Ø rear reflector

CATARIFRANGENTE SCT5 - SCT5 REAR REFLECTOR



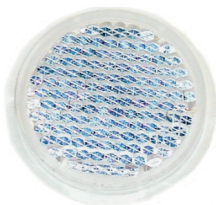
DIMENSIONI MECCANICHE

MECHANICAL SIZE



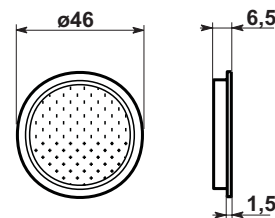
SCT5 = Catarifrangente rettangolare / rectangular rear reflector

CATARIFRANGENTE SCT7 - SCT7 REAR REFLECTOR



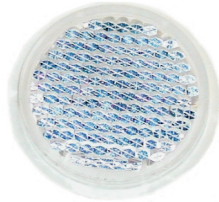
DIMENSIONI MECCANICHE

MECHANICAL SIZE



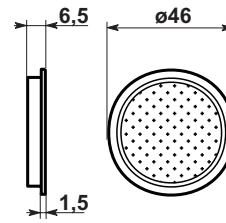
SCT7 = Catarifrangente Ø 46mm / 46 mm Ø rear reflector

CATARIFRANGENTE SCT8 - SCT8 REAR REFLECTOR



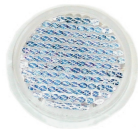
DIMENSIONI MECCANICHE

MECHANICAL SIZE



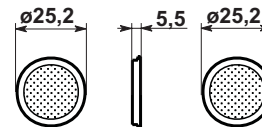
**SCT8** = Catarifrangente Ø 46mm con adesivo / 46 mm Ø sticker rear reflector

CATARIFRANGENTI SCT9 / SCT9-A - SCT9 / SCT9-A REAR REFLECTOR



DIMENSIONI MECCANICHE

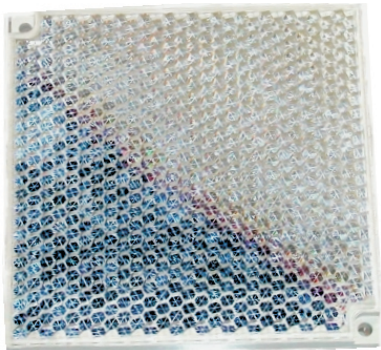
MECHANICAL SIZE



**SCT9**= Catarifrangente Ø25mm / 25 mm Ø rear reflector

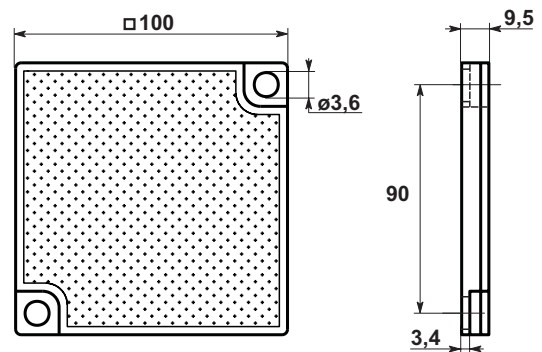
**SCT9-A**= Catarifrangente Ø25 mm con adesivo / 25 mm Ø rear reflector

CATARIFRANGENTE SCT10 - SCT10 REAR REFLECTOR



DIMENSIONI MECCANICHE

MECHANICAL SIZE



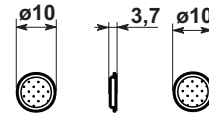
**SCT10** = Catarifrangente forma quadrata / square rear reflector

CATARIFRANGENTI SCT11 / SCT11-A - SCT11 / SCT11-A REAR REFLECTOR



DIMENSIONI MECCANICHE

MECHANICAL SIZE



**SCT11**= Catarifrangente Ø10mm / 10 mm Ø rear reflector

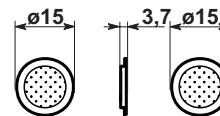
**SCT11-A**= Catarifrangente Ø10mm con adesivo / 10 mm Ø sticker rear reflector

CATARIFRANGENTI SCT12 / SCT12-A - SCT12 / SCT12-A REAR REFLECTOR



DIMENSIONI MECCANICHE

MECHANICAL SIZE



**SCT12**= Catarifrangente Ø15mm / 15mm Ø rear reflector

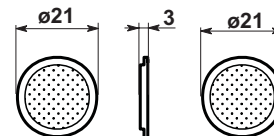
**SCT12-A**= Catarifrangente Ø15mm con adesivo / 15mm Ø sticker rear reflector

CATARIFRANGENTI SCT13 / SCT13-A - SCT13 / SCT13-A REAR REFLECTOR



DIMENSIONI MECCANICHE

MECHANICAL SIZE



**SCT13**= Catarifrangente Ø21mm / Ø21 mm rear reflector

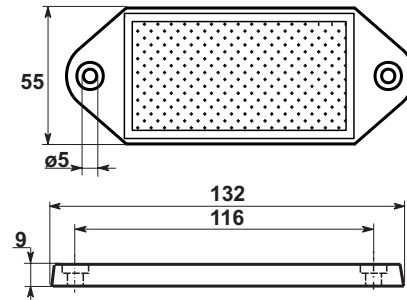
**SCT13-A**= Catarifrangente Ø21 mm con adesivo / 21 mm Ø sticker rear reflector

CATARIFRANGENTE SCT14 - SCT14 REAR REFLECTOR



DIMENSIONI MECCANICHE

MECHANICAL SIZE



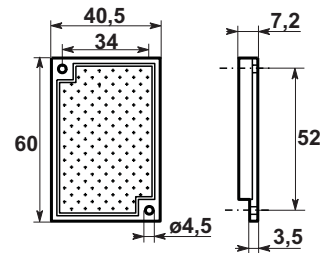
SCT14 = Catarifrangente rettangolare / rectangular rear reflector

CATARIFRANGENTE SCT15 - SCT15 REAR REFLECTOR



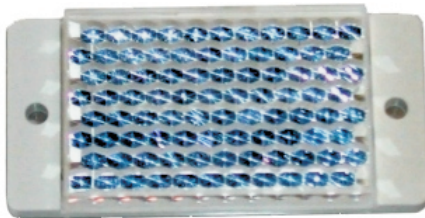
DIMENSIONI MECCANICHE

MECHANICAL SIZE



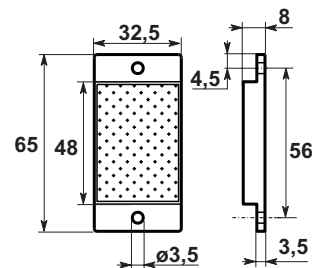
SCT15 = Catarifrangente rettangolare / rectangular rear reflector

CATARIFRANGENTE SCT16 - SCT16 REAR REFLECTOR



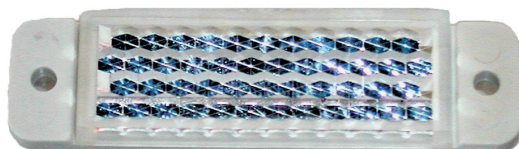
DIMENSIONI MECCANICHE

MECHANICAL SIZE



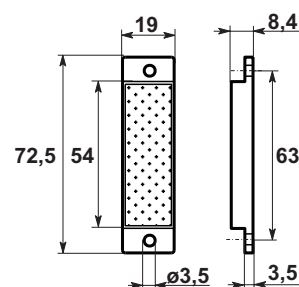
SCT16 = Catarifrangente rettangolare / rectangular rear reflector

CATARIFRANGENTE SCT17 - SCT17 REAR REFLECTOR



DIMENSIONI MECCANICHE

MECHANICAL SIZE



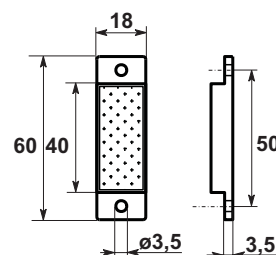
SCT17 = Catarifrangente rettangolare / rectangular rear reflector

CATARIFRANGENTE SCT18 - SCT18 REAR REFLECTOR



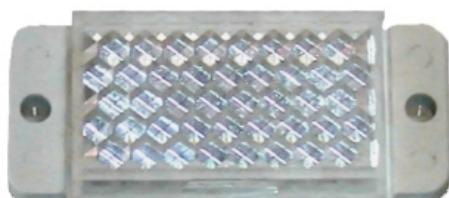
DIMENSIONI MECCANICHE

MECHANICAL SIZE



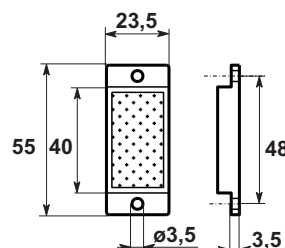
SCT18 = Catarifrangente rettangolare / rectangular rear reflector

CATARIFRANGENTE SCT19 - SCT19 REAR REFLECTOR



DIMENSIONI MECCANICHE

MECHANICAL SIZE



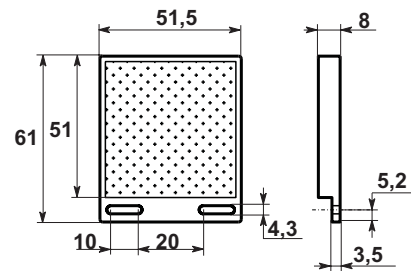
SCT19 = Catarifrangente rettangolare / rectangular rear reflector

CATARIFRANGENTE SCT20 - SCT20 REAR REFLECTOR



DIMENSIONI MECCANICHE

MECHANICAL SIZE



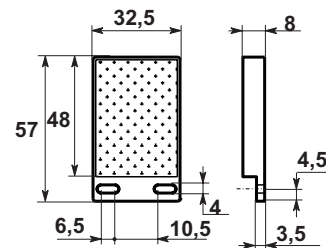
SCT20 = Catarifrangente forma quadrata / square rear reflector

CATARIFRANGENTE SCT21 - SCT21 REAR REFLECTOR



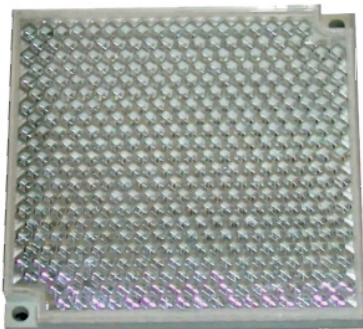
DIMENSIONI MECCANICHE

MECHANICAL SIZE



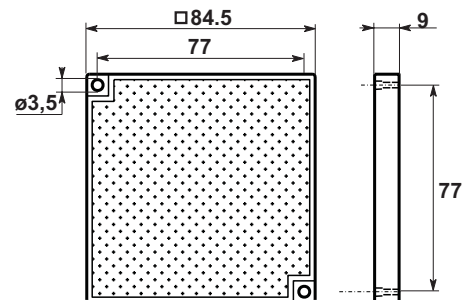
SCT21 = Catarifrangente rettangolare / rectangular rear reflector

CATARIFRANGENTE SCT23 - SCT23 REAR REFLECTOR



DIMENSIONI MECCANICHE

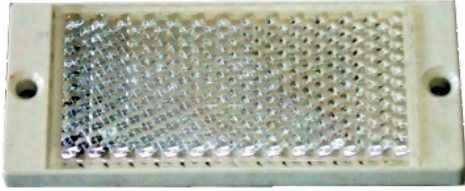
MECHANICAL SIZE



SCT23 = Catarifrangente forma quadrata / square rear reflector

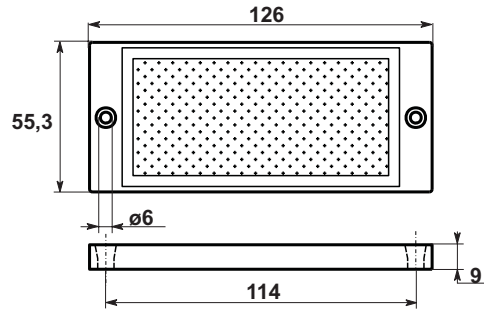


CATARIFRANGENTE SCT24 - *SCT24 REAR REFLECTOR*



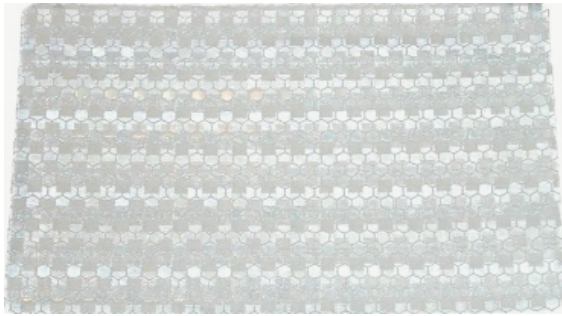
DIMENSIONI MECCANICHE

MECHANICAL SIZE



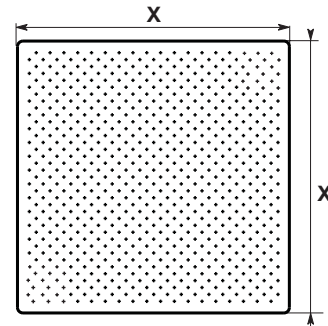
**SCT24** = Catarifrangente rettangolare / rectangular rear reflector

CARTA RIFRANGENTE - *REFLECTOR PAPER*



DIMENSIONI MECCANICHE

MECHANICAL SIZE

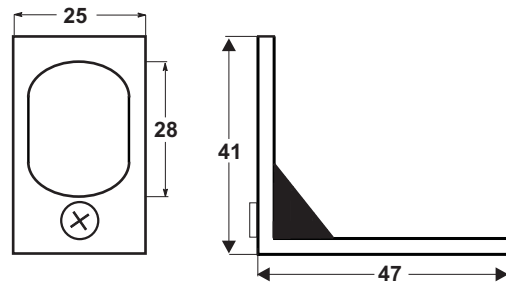


STF18 STAFFA DI FISSAGGIO - *STF18 MOUNTING BRACKET*



DIMENSIONI MECCANICHE

MECHANICAL SIZE



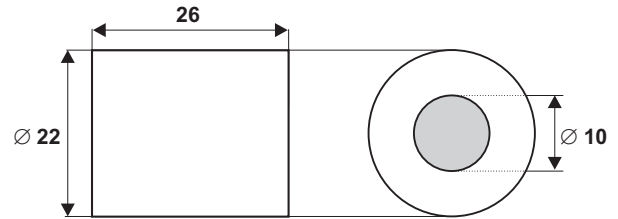
**STF18** = Staffa di fissaggio per fotocellule Ø 18mm / mounting bracket for 18 mm Ø optic sensors

**STRINGIRAGGIO - SHUTTER**



**DIMENSIONI MECCANICHE**

**MECHANICAL SIZE**



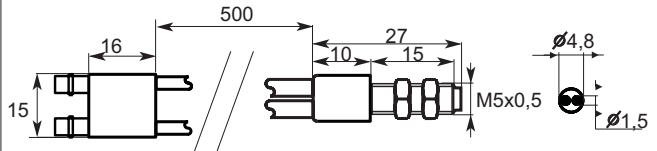
**XXX = STRINGIRAGGIO Ø / SHUTTER Ø**

**Fibra ottica a tasteggio diretto - Diffuse type optic fiber**



**DIMENSIONI MECCANICHE**

**MECHANICAL SIZE**



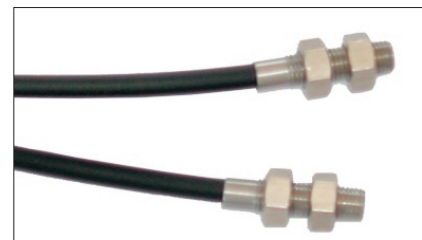
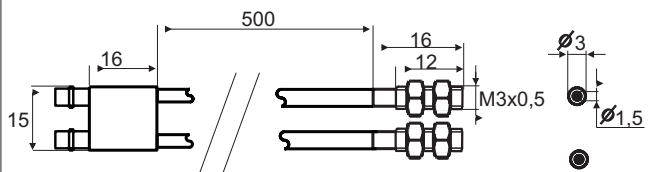
**FPO/D = fibra ottica tasteggio diretto / diffuse type optic fiber**

**Fibra ottica a barriera - Beam type optic fiber**



**DIMENSIONI MECCANICHE**

**MECHANICAL SIZE**



**FPO/B = fibra ottica barriera / beam type optic fiber**

**Altri prodotti**

- interruttori di prossimità induttivi;
- interruttori di prossimità capacitivi;
- interruttori di prossimità magnetici;
- interruttori di prossimità fotoelettrici;
  
- connettori e cassette di connessione per sensori;
  
- encoder incrementali ed assoluti;
  
- alimentatori / interfacce per sensori;
- alimentatori da rete e da secondario per uso generico;
  
- voltmetri, amperometri, contagiri, visualizzatori a pannello;
- contaimpulsi mono e bidirezionali, contaproduzione, contagiri;
- termometri e termoregolatori
  
- schede logiche programmabili per uso OEM;
  
- pulsanteria e finecorsa meccanici;

**Other products:**

- *inductive proximity switches;*
- *capacitive proximity switches;*
- *magnetic proximity switches;*
- *photo-electric sensors & proximity switches;*
  
- *connectors & connection boxes for sensor;*
  
- *incremental & absolute encoders;*
  
- *supply units / interfaces for sensors;*
- *power supply units for general purpose;*
  
- *voltmeters, ammeters, revolution counters, panel displays;*
- *counters mono & bi-directional, timers, revolution counters;*
- *thermometers & temperature controllers;*
  
- *OEM programmable logic cards;*
  
- *push-button & mechanical limit switches;*